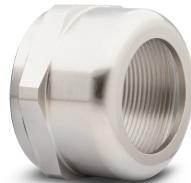


# Gland + gland locknut BiT DN-EMC



Industrial application

**EMC**

EMC



mechanical resistance



IP68  
5 Bar



## Technical data:

### Gland:

**Ingress protection:** IP68 – 5 Bar

**Operating temperature:**

Continuous: -20°C to +100°C

Short-term: -40°C to +150°C

Metric thread acc. to EN 60423

**Standards complied with:** EN 62444

**Gland locknut:**

Metric thread acc. to EN 60423

## Construction:

### Gland:

**Body:** nickel-plated brass

**Sealing ring:** chloroprene

**Clamping insert:** PA 6

**Contact spring insert:** special copper alloy

**O-Ring:** NBR

**Gland locknut:**

**Product material:** nickel-plated brass

## Application:

BiT D-EMC glands are suitable for use with BiTservo® and control cables (BiT 500®, BiT 750®, BiT 1000®) screened with tinned copper wires and manufactured by Cable Factory BITNER. Their construction ensures effective earthing of cable screens and fulfillment of electromagnetic compatibility (EMC). BiT D-EMC glands are easy to mount and dismount. They can be used in power, measuring or control systems where EMC compatibility is required.

Cat no.	Size	Spanner size [gland/gland locknut]	Suitable cable O.D. [mm]	Thread [mm]	Quantity per one package
DN1205EMC	M12x1,5	14/15	3,0 - 6,5	6	5
DN1605EMC	M16x1,5	20/19	5,0 - 10,0	6	5
DN2005EMC	M20x1,5	22/24	6,0 - 12,0	6	5
DN2504EMC	M25x1,5	30/30	10,0 - 18,0	8	4
DN3204EMC	M32x1,5	40/36	16,0 - 25,0	9	4
DN4001EMC	M40x1,5	50/46	22,0 - 32,0	9	1
DN5001EMC	M50x1,5	58/60	30,0 - 38,0	9	1
DN6301EMC	M63x1,5	75/70	37,0 - 53,0	10	1

Cable Factory BITNER reserves the right to modify the specifications without prior notice.